

HP OpenVMS

PERFDAT GUI V4.3.1

Release Notes

October 2016

Revision/Update Information
Software Version
Operating System Version

New manual.
PERFDAT GUI V4.3.1
XP / Win 7 / Win 8.1 / Win 10
2000 / 2003 / 2008 / 2012



Hewlett Packard
Enterprise

October 2016

© Hewlett-Packard Enterprise, 2016. All rights reserved.

Hewlett-Packard Company makes no warranty of any kind with regard to this material, including, but not limited to, the implied warranties of merchantability and fitness for a particular purpose. Hewlett-Packard shall not be liable for errors contained herein or for incidental or consequential damages in connection with the furnishing, performance, or use of this material.

This document contains proprietary information, which is protected by copyright. No part of this document may be photocopied, reproduced, or translated into another language without the prior written consent of Hewlett-Packard Enterprise. The information contained in this document is subject to change without notice.

HPE, the HPE logo and OpenVMS are trademarks of HPE.

VSI OpenVMS is a trademark of VMS Software Inc.

Microsoft, MS-DOS, Windows, and Windows NT are trademarks of Microsoft Corporation in the U.S. and/or other countries.

All other product names mentioned herein may be trademarks of their respective companies.

Confidential computer software. Valid license from HPE required for possession, use or copying.

Hewlett-Packard Enterprise shall not be liable for technical or editorial errors or omissions contained herein. The information is provided “as is” without warranty of any kind and is subject to change without notice. The warranties for Hewlett-Packard Enterprise products are set forth in the express limited warranty statements accompanying such products. Nothing herein should be construed as constituting an additional warranty.

Customer may not modify or reverse engineer, remove, or transfer the software or make the software or any resultant diagnosis or system management data available to other parties without HPE’s or its authorized service provider’s consent. Upon termination of the services, customer will, at HPE’s or its service provider’s option, destroy or return the software and associated documentation in its possession.

Printed in Austria.

Contents

| | |
|---|----|
| Preface | 4 |
| PERFDAT GUI - Installation Release Notes | 5 |
| 1.1 Installation | 5 |
| 1.2 Supported Windows versions..... | 5 |
| HP PERFDAT GUI V4.3.1 – New Features | 6 |
| 2.1 Windows support | 6 |
| HP PERFDAT GUI V4.3.1 – Bug Fixes | 7 |
| 3.1 HP PERFDAT GUI Startup..... | 7 |
| 3.1.1 GUI is running but main window (Data Explorer) is not visible | 7 |
| 3.1.1 GUI fails to start if the user does not have write permission on the HKLM registry tree..... | 7 |
| 3.2 Saving Graphs | 8 |
| 3.2.1 Graph Save Options - Set default directory..... | 8 |
| 3.2.2 Save Graph – Run-time error ‘1050’ | 10 |
| 3.3 Data Explorer Help menu | 11 |
| 3.3.1 Error message if the user opens the release notes sub-directory | 11 |

Preface

Audience

This manual is intended for all HP PERFDAT users who have installed the HP PERFDAT GUI. Read this manual before you install, upgrade or use version V4.3.1 of HP OpenVMS PERFDAT GUI.

Document Structure

- Chapter 1 contains installation and support information
- Chapter 2 HP PERFDAT GUI V4.3.1 new features
- Chapter 3 HP PERFDAT GUI V4.3.1 bug fixes

PERFDAT GUI - Installation Release Notes

This chapter contains information that you need to know before installing HP OpenVMS PERFDAT GUI V4.3.1.

1.1 Installation

Extract the ZIP-File PERFDATGUI431_SETUP.ZIP into a temporary directory and double-click on the PERFDATGUI431_SETUP.EXE image. SETUP guides you through the installation. You will be asked to define the installation directory. If you are upgrading to HP PERFDAT GUI V4.3.1 define the same directory as the previous GUI version was installed in. Otherwise all the existing configuration settings will be lost.

In case of problems installing PERFDAT GUI V4.3.1 please contact HP PERFDAT support:

PERFDAT@HPE.COM

1.2 Supported Windows versions

HP PERFDAT GUI V4.3.1 supports the following Windows versions:

- Windows 2000
- Windows 2003
- Windows 2008
- Windows 2012
- Windows XP
- Windows 7
- Windows 8.1
- Windows 10

HP PERFDAT GUI V4.3.1 – New Features

This chapter contains information about the new features of HP PERFDAT GUI V4.3.1.

2.1 Windows support

HP PERFDAT GUI V4.3.1 is fully supported on Windows 8.1, Windows 10, Windows 2008 and Windows 2012.

HP PERFDAT GUI V4.3.1 – Bug Fixes

This chapter lists the major bug-fixes delivered with HP PERFDAT GUI V4.3.1.

3.1 HP PERFDAT GUI Startup

3.1.1 GUI is running but main window (Data Explorer) is not visible

When the GUI gets closed the window position of the main window gets saved so that the GUI's main window is displayed on the same screen and position when it is re-started.

If prior to HP PERFDAT GUI V4.3.1 the PC was connected to several screens and the screen on which the main window was displayed was disconnected after the GUI was closed, the main window was not visible the next time the user started the GUI, as the original screen was not connected to the PC anymore.

This bug has been fixed in HP PERFDAT GUI V4.3.1. Now, in such a scenario (the original screen is not connected to the PC any more) the main window will be automatically displayed on the main screen.

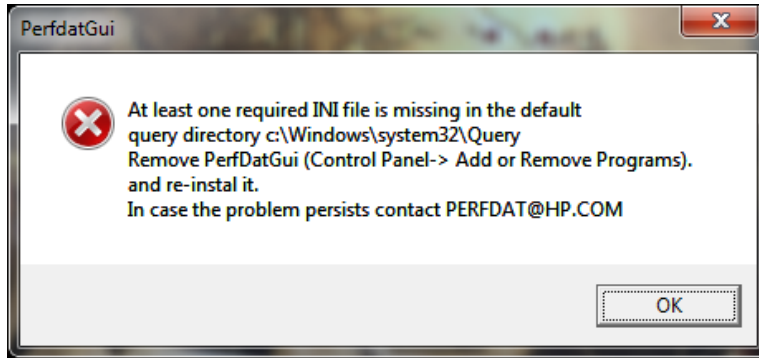
3.1.1 GUI fails to start if the user does not have write permission on the HKLM registry tree

During the HP PERFDAT GUI installation some control parameters are stored under the registry key:

HKLM\SOFTWARE\HP\PerdatGui.

Thus, read access to this registry entry is a prerequisite to run the GUI.

In fact, prior to HP PERFDAT GUI V4.3.1, the user had to have write permission for this registry key to start the GUI. Otherwise the user experienced the following exception whenever the GUI was started:

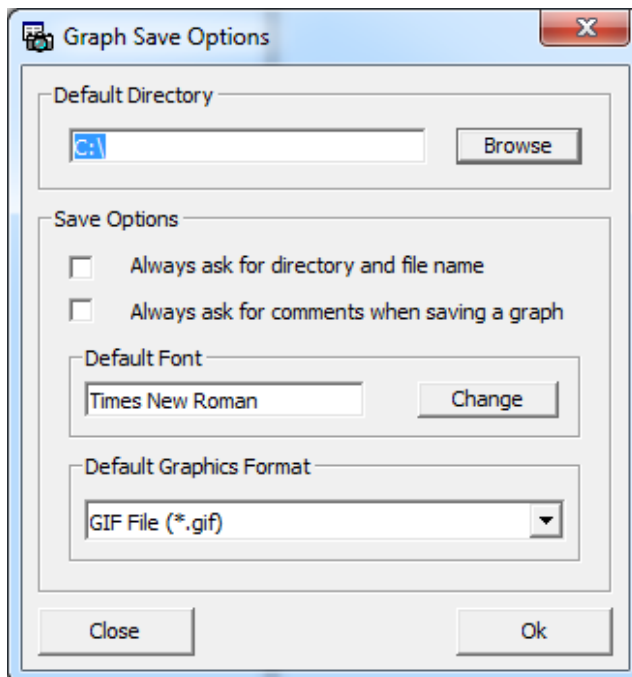


This bug has been fixed in HP PERFDAT GUI V4.3.1. Now, read access to the aforementioned registry key is sufficient to start the GUI.

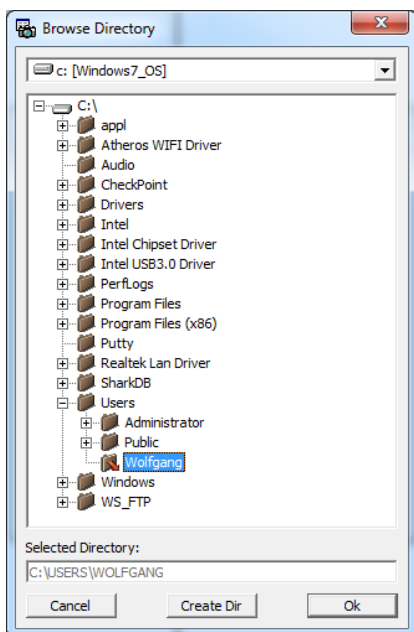
3.2 Saving Graphs

3.2.1 Graph Save Options - Set default directory

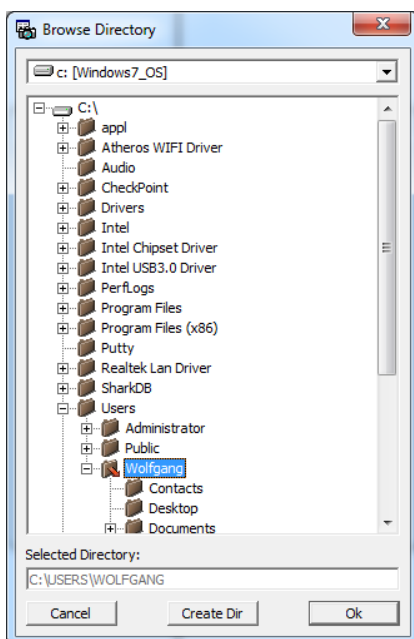
With the *Graph Save Options* dialog one can define and modify defaults required for saving graphs on the local PC. One of these defaults is the directory to store the graphs (to invoke the *Graph Save Options* dialog click the *Configuration->Graph Save Options* menu item)..



Clicking on the *Browse* button opens the directory explorer to select or create the default directory. Prior to HP PERFDAT GUI V4.3.1 the last sub-directory in a directory always appeared as an empty directory, even if it was not, as shown below. Thus, none of the directory entries of the last sub-directory could be selected as the default directory to save graphs.



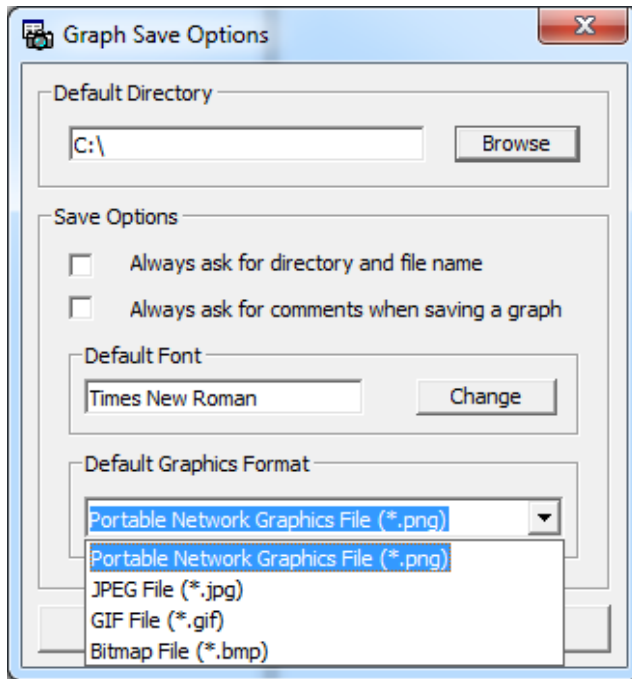
This bug has been fixed in HP PERFDAT GUI V4.3.1. Now, the directory entries of the last sub-directory are also selectable:



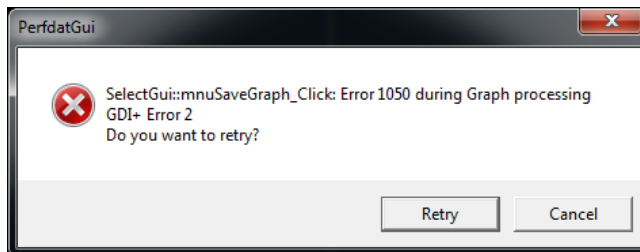
3.2.2 Save Graph – Run-time error ‘1050’

With the *Graph Save Options* dialog one can define the default graphics output format when saving graphs locally on the PC. The supported output formats are:

- PNG
- JPEG
- GIF
- BMP



If prior to HP PERFDAT GUI V4.3.1 the GUI was running on Windows 7 SP1 or higher and PNG or GIF was selected as the default graphics output format to save graphs, the *Save Graph* operation failed due to a bug in the HP PERFDAT GUI graphics library with:



3.3 Data Explorer Help menu

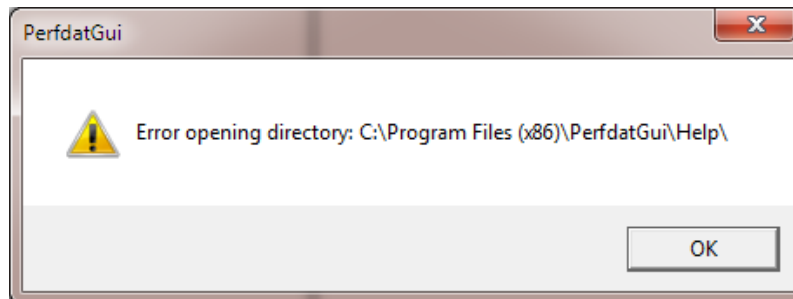
3.3.1 Error message if the user opens the release notes sub-directory

When the HP PERFDAT GUI is installed all release notes starting from release V3.2.1 are stored in the HELP sub-directory of the installation directory. The user can click on the *Data Explorer* menu item

Help->Release Notes->Prior Releases...

to open this directory in the windows explorer.

Prior to V4.3.1 sometimes the following error message was (incorrectly) displayed although the release notes directory was opened:



This bug has been fixed in HP PERFDAT GUI V4.3.1.